

Garbage

Garbage is food scraps, non-recyclable plastics, all plastic lids under 3" across, greasy pizza boxes, soiled paper products, used aluminum foil, etc.

Recycling

Please be sure your recyclables are **CLEAN, DRY** and **EMPTY** (they do not contain liquid or food residue.) This is very important!

Recyclables are:

All plastics (no styrofoam) stamped 1-7 (like sour cream, yogurt and salsa containers)
Junk mail
Newspapers
Rinsed out aluminum and tin cans
Rinsed out milk and juice cartons
Flattened cardboard (in specified bin)

A partial list of **non-recyclables** includes **glass** and **household batteries**. You can pay to recycle your glass at Methow Recycles and you can dispose of your batteries there as well.

If the blue bins are full, clean recycling is acceptable in bags or boxes placed next to the bins.

Methow Recycles will also accept certain plastic bags which are recycled into TREX decking. A poster containing more information is on the back wall of our garbage/recycle area.

Please call Methow Recycles at (509)997-0520 for a complete list of recyclable and non-recyclable items.

Reusable Items

Reusable items such as clothing, shoes, books, dishes and small working household appliances such as toasters, blenders, light fixtures, etc. can be donated. These reusables can go to the organizations listed below.

Please call first to verify hours open and the acceptability of your donation.

1. **Methow Recycles** (their Remake Center accepts reusable items such as sinks, lighting fixtures, cabinets, etc.):

<http://methowrecycles.org/>

Telephone number - **509-997-0520**

2. **The Methow Valley Senior Center and Thrift Store** (accepts donations of gently used clothing and household items. Please note they cannot accept furniture, large electronics such as TVs or computers, or any broken or dirty items.):

http://www.methownet.com/senior_center.html

Telephone number - 509-997-7722

3. **The Cove** (in addition to food accepts donations of bags - plastic, paper, cloth):

<http://www.thecovecares.com/>

Telephone number - 509-997-0227

4. **Room One** (accepts gently used clothing):

<http://www.roomone.org/>

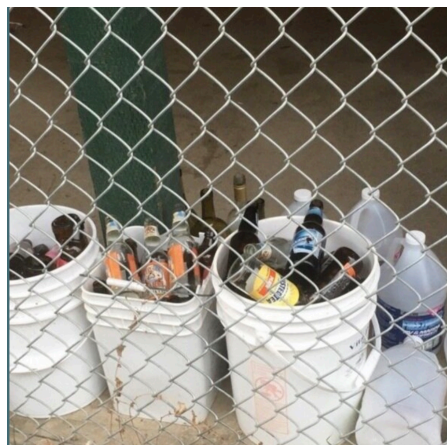
Telephone number - 509-997-2050

Glass

As mentioned above, glass is **not** collected for recycling from our garbage/recycling area. We are different from other areas because the Methow Valley has to transport our glass to a glass recycling facility outside of the valley and this costs \$\$\$\$.

If you have glass you have choices. You can take it to Methow Recycles located in Twisp next to the Transfer station (the dump) where they charge \$5.00 per large trash can full of glass and it will get sent to a recycling facility. They are open 10am-4pm, Tues., Thurs., and Saturdays. It does get recycled responsibly and made into other products. If you have a residence outside of the valley that recycles glass, you can take it with you when you go there. Or, the least desirable choice, you could just put it in our trash compactor.

When you place glass in buckets like the picture below - someone has to remove these items and recycle them, or place them into the dumpster. Because of these infractions, we now pay someone to monitor the area and clean up these mistakes - that is costing all of us. Please recycle responsibly.



General Reminder

Please leave the garbage/recycle area neater than you found it. If it's a mess or the bins are full, call one of the SMRC Board members and let them know. Their names and numbers are posted at the clubhouse. Or think about spending a minute or two tidying up yourself!

And lastly, to keep non-authorized users from gaining access through doors left open and unlocked, **please push the door fully closed and wait and ensure the door is locked when leaving.**

Eco-Leaders

Thanks for taking the time to read this. We have established a group of eco-leaders who are available should you have more questions about our recycling practices here at SMRC.

Here are the eco-leaders and their contact information:
The email address for all of us is ecoleaders6@gmail.com
Karen Mulcahy and Rick Rottman - [509-996-2769](tel:509-996-2769)
Patti and Rick Nordby - [509-996-3546](tel:509-996-3546)
Alan Sodell - [425-236-8350](tel:425-236-8350)
Kitty Ryker - [425-337-9754](tel:425-337-9754)